

# Use Fly Ash for...

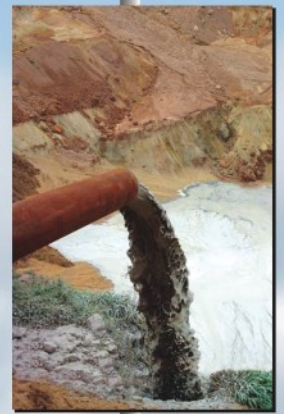
**Roads & Embankments** ←

**Construction & Building Materials** ↑

**Agriculture** →

**Mine Filling** ↓

- ◆ Makes cement and mortar stronger.
- ◆ Cuts down construction cost by replacing upto 35% cement.
  - ◆ Makes strong and durable building materials.
  - ◆ Excellent eco-friendly material for Road Embankments.
- ◆ Nourishes agricultural soil, increases crop yield by 15% to 50%.
  - ◆ Reclaims wastelands.
  - ◆ Ideal material to fill mines.



For availability of Fly Ash in different States at NTPC's 15 Coal based Power Plants, please log on to [www.ntpc.co.in](http://www.ntpc.co.in) or [www.ntpcindia.com](http://www.ntpcindia.com) and click on the 'Ash Utilization' link.

**For more information, please contact :**

Ash Utilization Division, NTPC Limited, A-11, NFL Premises, Sector 24, NOIDA-201301 (UP). Ph : 0120-2412745, 2412438, Fax : 0120-2411962, E-mail : [ash@ntpc.co.in](mailto:ash@ntpc.co.in)



**NTPC Limited**  
(A Govt. of India Enterprise)



**Save**  
1.6 billion cu.m.  
of **precious**  
**soil...**



**by using**  
**Pond**  
**Ash...**



**in constructing**  
**23,000 Kms of**  
**Highway**  
**Embankments**



**Statutory Requirement**

Pond Ash is to be used in Road/Flyover Embankment construction work within a radius of 100 Kms of a Thermal Power Station.



**ADVANTAGES OF ASH**

	SOIL	ASH
SIMPLE TO USE	✓	✓
24x7 CONSTRUCTION IN ALL SEASONS	X	✓
FOR WEAK/CLAYEY SOIL	X	✓
SETTLEMENT AFTER INITIAL COMPACTION	✓	X
EMBANKMENTS OF LESS WIDTH	X	✓

For availability of Fly Ash in different States at NTPC's 15 Coal based Power Plants, please log on to [www.ntpc.co.in](http://www.ntpc.co.in) or [www.ntpcindia.com](http://www.ntpcindia.com) and click on the 'Ash Utilization' link.

**For more information, please contact :**

Ash Utilization Division, NTPC Limited,  
A-11, NFL Premises, Sector 24, NOIDA-201301 (UP).  
Ph : 0120-2412745, 2412438, Fax : 0120-2411962

**एनटीपीसी**  
**NTPC Limited**  
(A Govt. of India Enterprise)





# Versatile Fly Ash – for all Building needs. Trusted by Professionals.



**ASH BRICKS**

## Fly Ash...

Makes a wide variety of strong and durable finishing Building materials.



**FLY ASH BLOCKS**



**WOOD SUBSTITUTE DOORS**

As a wood substitute makes weather-resistant doors and panels.

Partly replaces cement in mortar, cuts down construction cost.



**INTERLOCKING BLOCKS**



**MCR TILES**

*For more details on technologies and availability of FLY ASH at NTPC's 15 Power Plants, contact :*

Ash Utilization Division, NTPC Limited, A-11, NFL Premises, Sector 24, NOIDA-201301 (UP). Ph : 0120-2412745, 2412438, Fax : 0120-2411962  
Log on to [www.ntpcindia.com](http://www.ntpcindia.com) or [www.ntpc.co.in](http://www.ntpc.co.in) and click on 'Ash Utilization' link.



**NTPC Limited**  
(A Govt. of India Enterprise)

